



STORMSHIELD

ENDPOINT SECURITY

EVOLUTION

Increase your workstations' protection level with a solution that features enhanced software architecture



EPP+EDR

THE PERFECT PAIRING

Signatureless

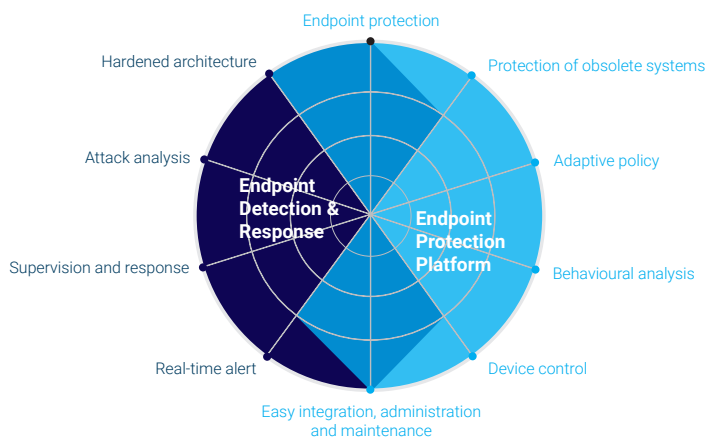
OBSOLETE AND DISCONNECTED ENVIRONMENT

Enhanced

GUARANTEED OPERATIONAL

Contextual

TAILORED SECURITY POLICY



EPP + EDR

The pairing of the best EPP and EDR techniques combats the most sophisticated cyberattacks by increasing the security level, ensuring optimal protection. The attack is blocked and the response information is available for later analysis.

Behavioural analysis

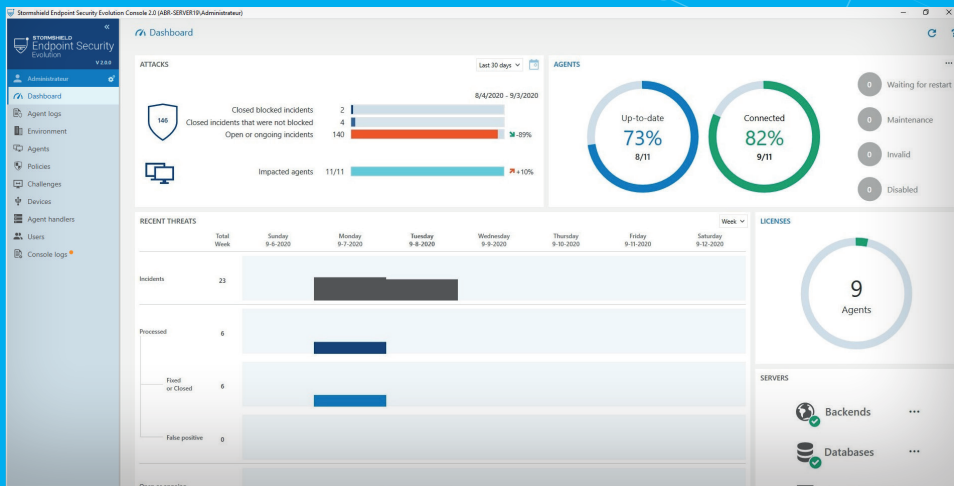
- Zero-day signatureless protection
- Protection against vulnerabilities
- Protection against API hijacking

Context-sensitive protection

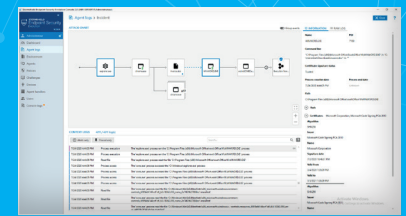
- Security policy tailored to the environment
- Combination of behavioural analysis and device control

Enhanced solution

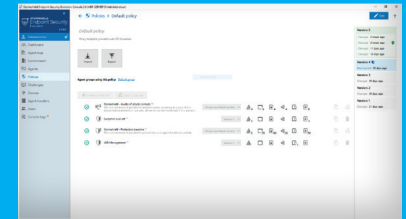
- Isolated and secure software components
- Integrity checking for the various modules
- The agent cannot be user-deactivated



Dashboard



Detailed view of an incident



Security Policy view

FEATURES

Signatureless protection

Zero-day protection against known and unknown threats

Behavioural analysis techniques

- Buffer overflow
- Privilege escalation
- Process hollowing
- Heap spraying
- Application hooking
- Token stealing
- Keylogging

Ransomware protection

- Malicious encryption process
- Windows Shadow Copy
- Backup policy

Device control

- WiFi networks
- USB stick
- Access to disk volumes
- Network connections
- Execution control
- Firewalling

Optimised agent

- Memory usage
- CPU usage

Security policy

- Dynamic adaption according to context
- Set of behavioural analysis and device control rules
- Pre-defined models

Centralised administration

- Policy management by agent groups
- Role-based administrator management
- Activation/deactivation of modules by agent group

AGENT

COMPATIBILITY

Resources

CPU: 1 core 1 GHz (min.) - 2 cores 2 GHz (recommended)

RAM: 1 Gb (min.) - 2 Gb (recommended)

Disk space: 100 MB (installation) - 200 MB (data)

Operating system

Client: Windows 7, 8.1, 10 & 11

Server: Windows Server 2008 R2, 2012 R2, 2016, 2019 & 2022

ADMINISTRATION

Backend

CPU: 1 core 1 GHz (min.) - 2 cores 2 GHz (recommended)

RAM: 1 Gb (min.) - 2 Gb (recommended)

Disk space: 100 MB (installation) - 200 MB (data)

Windows Server 2008 R2, 2012 R2, 2016, 2019 & 2022

Agent handler

CPU: 2 cores 2 GHz (minimum)

RAM: 2 GB (minimum)

Disk space: 200 MB (installation) - 1 GB (data - minimum)

Client: Windows 7, 8.1, 10 & 11

Server: Windows Server 2008 R2, 2012 R2, 2016, 2019 & 2022